

DURAPRESS 14 FINISH ROLLER

A close-up photograph of the DuraPress 14 finish roller, showing the red-painted metal frame and the black rollers. The machine is angled, showing its length and the spacing between the rollers.

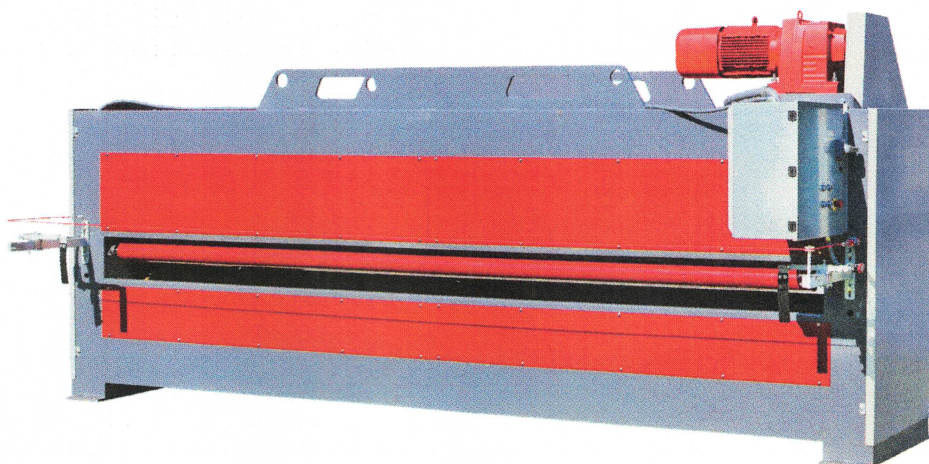
DuraPress
14
BY BAUMEISTER EQUIPMENT

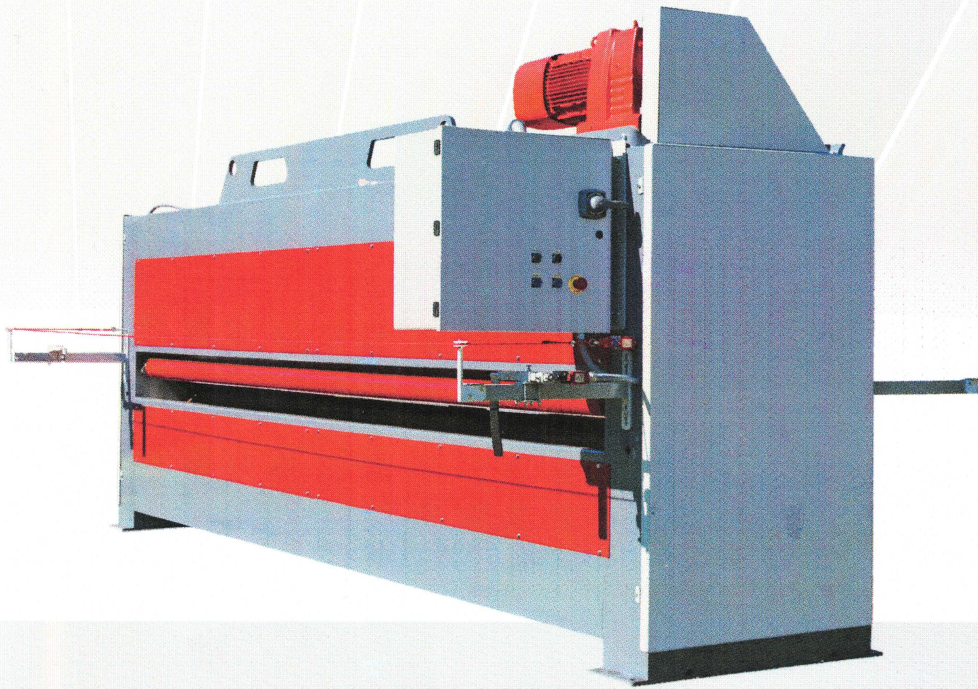
BUILT FOR PERFORMANCE & EFFICIENCY

Engineered to keep pace with high-demand production, the **DuraPress 14 finish roller** features a rugged steel frame and a precision drive system built for years of reliable operation. Its simplified design offers clear access to internal components, making routine maintenance fast and frustration-free.

Operators benefit from easy roll height adjustments and an integrated e-stop system with interlock, prioritizing both efficiency and safety on the floor. Powered by a 10 HP motor with a soft-start VFD, it delivers smooth, consistent operation at speeds up to 90 feet per minute.

With custom widths available up to 16 feet and an industry-first removable shaft system, the **DuraPress 14** sets a new standard in serviceability and throughput—ready to scale with your shop's production goals.

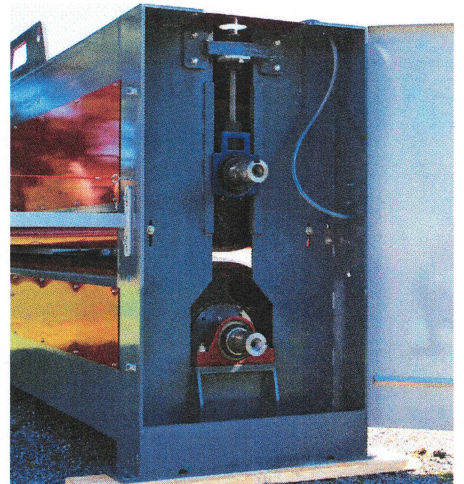
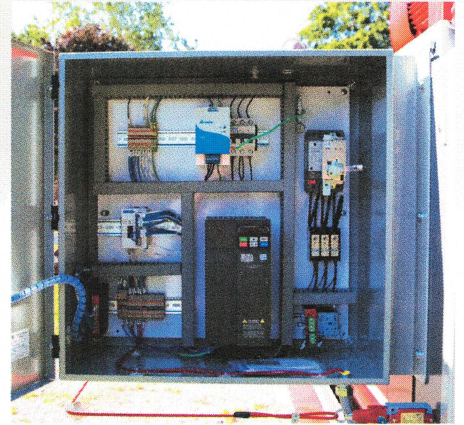




FEATURES

- **Built for Durability:** Heavy-duty steel frame and precision designed drive system stand up to daily wear in demanding shops.
- **Easy Maintenance Access:** Simplified design with fewer moving parts and clear access points, keeps downtime to a minimum.
- Simplified roll height adjustment
- Integrated e-stop system with interlock
- 10 hp motor with soft start VFD (3 phase 230-480 volt)
- Produces at 90 feet per minute
- Available in custom width up to 16'
- Industry first, removable shaft replacement in the rolls.

*For more information about the **DuraPress 14**, contact Baumeister Equipment Sales today!*



WASSERMAN & ASSOCIATES, INC.

www.wasserman-associates.com

2341 Shepard Rd, Milford, NE 68405

Phone: 800-382-0329

Fax: 402-761-2422